

# DLN REDDY

## UNCOVERED

15 March - 27 April 2024



## DLN, Unfettered

This show features works from the family collection of DLN Reddy. Most of them have never been exhibited before. The works are testimony to the fierce commitment of the artist to his practice for over five decades; they reveal several of the obsessions that have haunted him through those years.

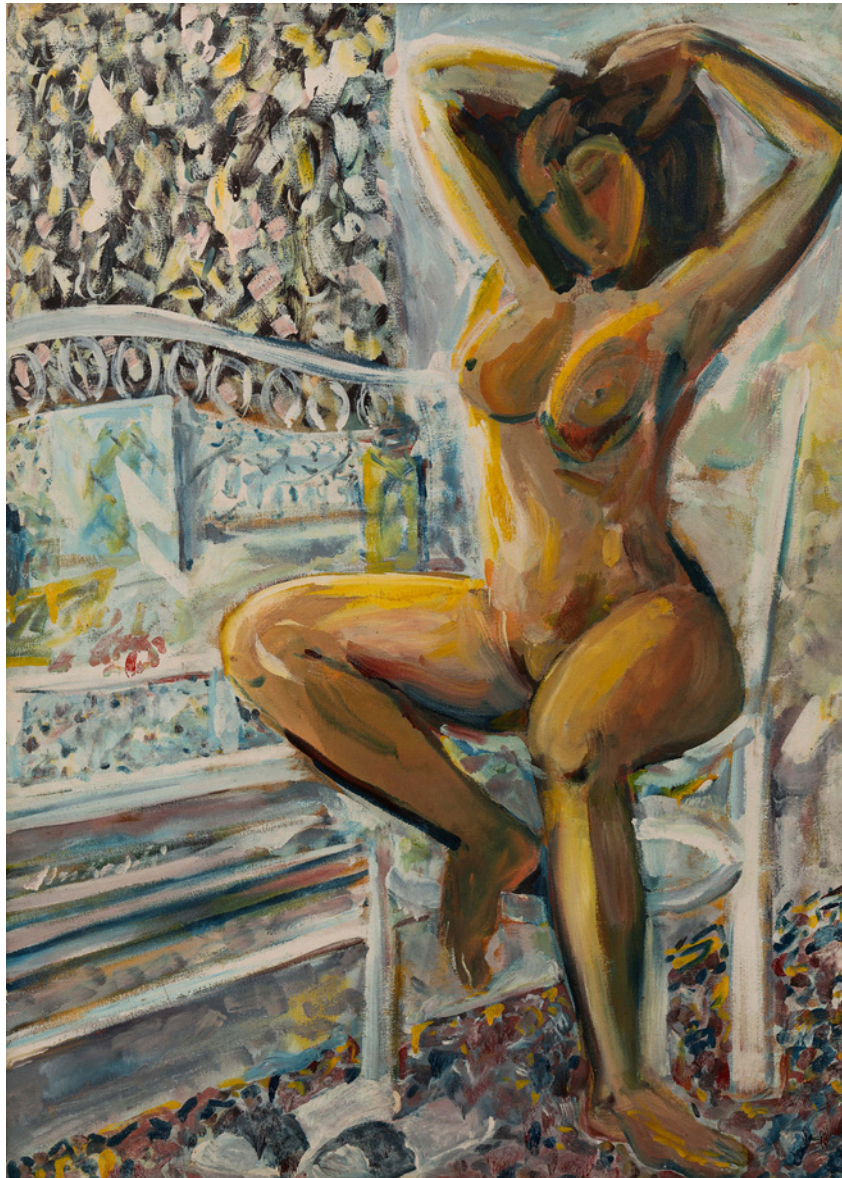
Even a cursory listing of the two-dimensional works can be revealing: lithographs, aquatints, and etchings; drawings and paintings with pencil, crayons, pastels, pen, ink, acrylic, charcoal, water color and coffee stain on reverse glass, paper, canvas, board and cello sheets. Alongside these are large and small three-dimensional modernist works in an equally dizzying range of media: bronze, wood, terracotta; assemblages made from mundane, quotidian objects - bottles, vessels, blades, sickles - collected from the by-lanes of Hyderabad, and its famed Jumeraat Bazaar. These quirky, random finds are then transformed into humanized objects that cheekily play in the interstices between figuration and abstraction. Often made in pairs of angular males and bulbous females, these works of bricolage brim with sexual freedom and erotic charge. "When I am stuck with one work or project, I take up a new medium. The process keeps changing, the objects evolve accordingly".

"Anyone can be an artist", says DLN, but not everyone can be the kind of artist that he himself has been. Born into a farmer's family in Nerada in erstwhile Andhra Pradesh, he joined the only art school in the city of Hyderabad - despite the apprehensions of his immediate family - and completed his training at MSU Baroda. Since then, his gaze on Hyderabad, its inhabitants, its art circuits, its sexual mores and politics has been as one of an alert, observant and insouciant outsider - cool and distant, unerring and consistent. His works are marked by a confident draughtsmanship, and by an easy, enviable competence with color, technique and process. Unconcerned with institutional norms, unperturbed by market and peer expectations, DLN's works turn away from the urban dictums and middle-class truisms that surround him. It is this sardonic, up-close, distant, insider-outsider perspective that has informed and defined much of his artistic output.

"I am an artist from the 70's who almost always goes "untitled". Feel free to interpret this oeuvre", reads DLN's Instagram account. Wilfully reclusive, DLN did not seek the limelight. In turn, the lights of the artist world also flickered on him accordingly – sometimes glaringly, at other times haltingly, grudgingly, always unevenly. While the artist himself was unassuming and reticent, his art on the other hand was fierce, and uncompromising. Homes, interiors, landscapes, solitary human figures, tense human relationships, overt sexual obsessions recur in his works, but it is the sensuous, sexualized figures of woman, and the associated, assorted sexual acts that eventually become their dominant leitmotifs – especially in the works chosen for this show. There is freedom, fury, fearlessness and aesthetic confidence in the often savage ways in which DLN fused material and content as he translated private obsessions into complex spaces of erotic fantasies. The works depict bodies – salacious, unleashed and unfettered – in multi-faceted density and detail. And yet, what is disquieting about them is a complete lack of pressure to assert or claim, to conform or perform. Indifferent to the viewer, uninterested in critical commentary and contemporary disposition, the works in the show, like many of the self-absorbed protagonists in them, are intensely inward, complicated and dramatic beings that startle us out of deadened habits of looking and being.

"Look at my works, and you will find in them the answers to the questions you are seeking", says DLN. With this, the onus has shifted – suddenly, entirely – onto the viewers, forcing them to decrypt for themselves, not just the questions but also the strong reactions that the images may have provoked. Encountering the images is to enter into a serious, escalating game of bare and dare. Denied permission to be merely lewd or simply prurient, the shift defies the viewer to respond in equally unembellished, astute ways. Taken together, the works and the words reveal DLN for what he truly is – a consummate, fearless risk taker, exposing us to ourselves, with only the material in his hands as the site of his fecund artistic practice. It is this rare, integrity-fuelled, artistic intelligence, and conceit, that the exhibition wishes to showcase and salute.

~ Kirtana Thangavelu



*Untitled*, 1980s

Enamel on canvas  
Signed 'dlr reddy' lower left  
Inscribed 'DLN' on reverse  
45 x 33 in. | 114.3 x 83.8 cm.





*Untitled*, Late 90s

Terracotta assemblage  
13 3/4 x 8 1/4 x 7 in.  
34.9 x 21 x 17.8 cm.



*Untitled, 2009*

Enamel on canvas

Signed and dated 'dln '09' lower center

Signed and dated 'dln Reddi '09' on reverse

64 1/2 x 81 1/2 in. | 163.8 x 207 cm.



*Untitled, 1973*

India ink on paper  
Signed and dated 'dlw 73'  
lower left  
8 1/2 x 6 in. | 21.6 x 15.2 cm.



*Untitled*, 1994 - 97  
Metal alloy assemblage  
13 1/2 x 7 1/2 x 8 in.  
34.3 x 19.1 x 20.3 cm.

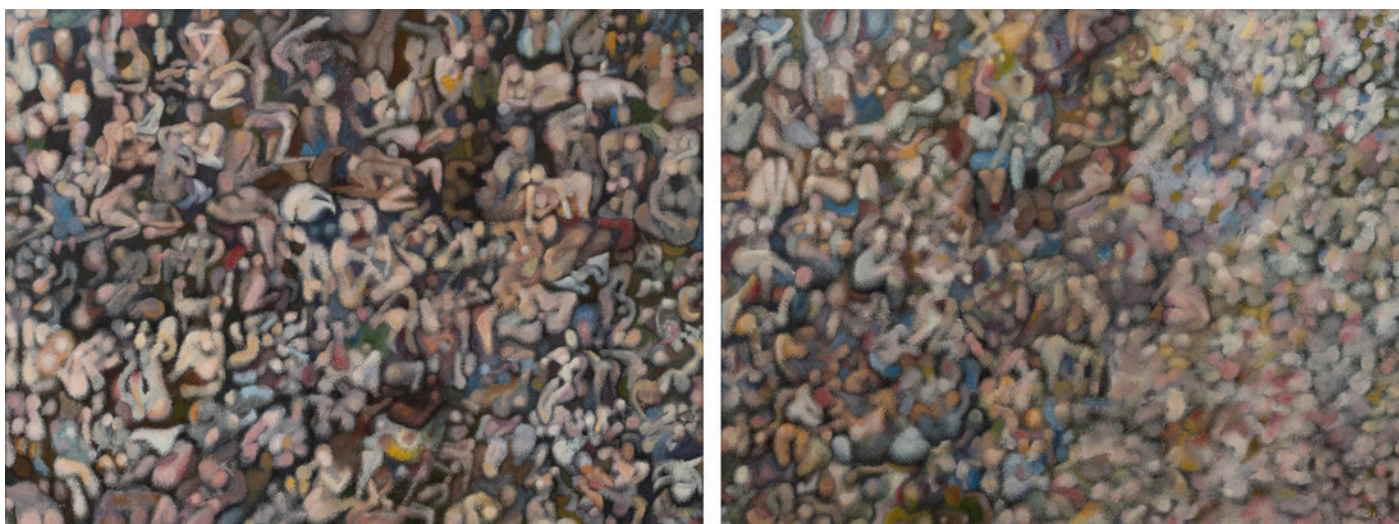




*Untitled, 1994 - 97*

Metal alloy assemblage  
13 x 12 in. | 33 x 30.5 cm.





*Untitled, 2008*

Enamel on canvas

Left Panel: Signed 'dlN' lower left

Right Panel: Signed 'dlN' lower right

Signed and dated 'dlN '08' on reverse, both panels

Diptych size: 35.5 x 95 in. | 90.1 x 241 cm.

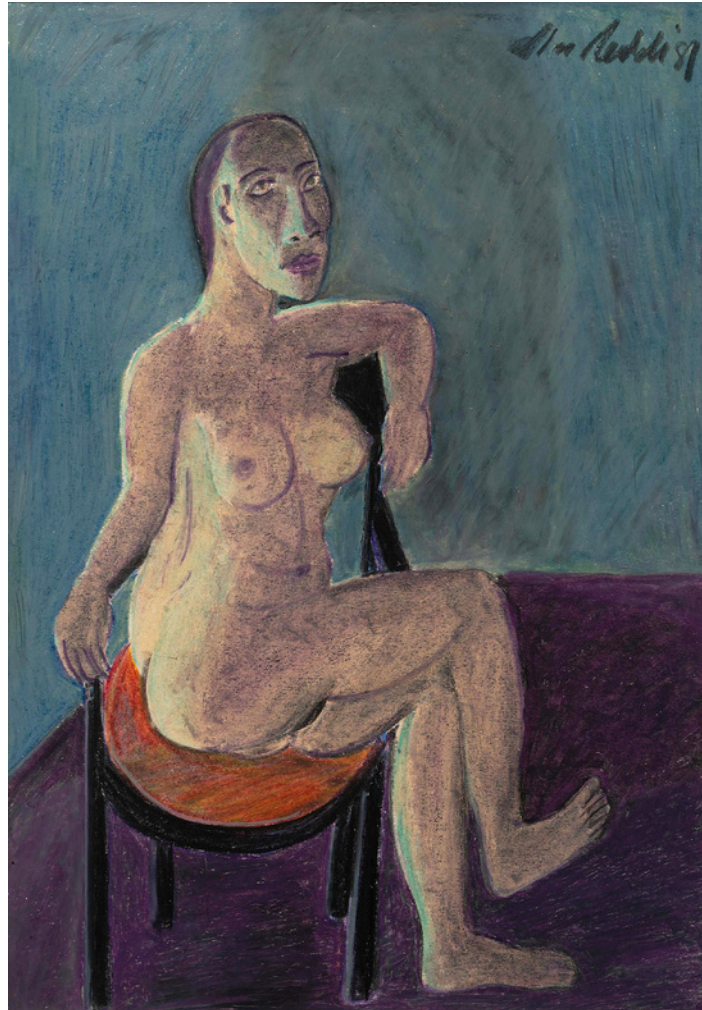
Each: 35 1/2 x 47 1/2 in. | 90.1 x 120.6 cm.

Diptych



*Untitled*, Late 80s

Cast bronze  
14 1/2 x 7 1/2 x 9 in.  
36.8 x 19.1 x 22.9 cm.



*Untitled,*

Pastel on paper

Signed and dated 'dl n Reddi '81'

top right

16 1/2 x 12 in. | 41.9 x 30.5 cm.





*Untitled*, 1991

Etching

Signed 'dln Reddi' lower right

10 x 17 in. | 25.4 x 43.2 cm.

A/P



*Untitled*, 1998  
Etching  
Signed and dated 'dln Reddi '98'  
lower right  
19 1/4 x 13 in. | 48.9 x 33 cm.  
A/P

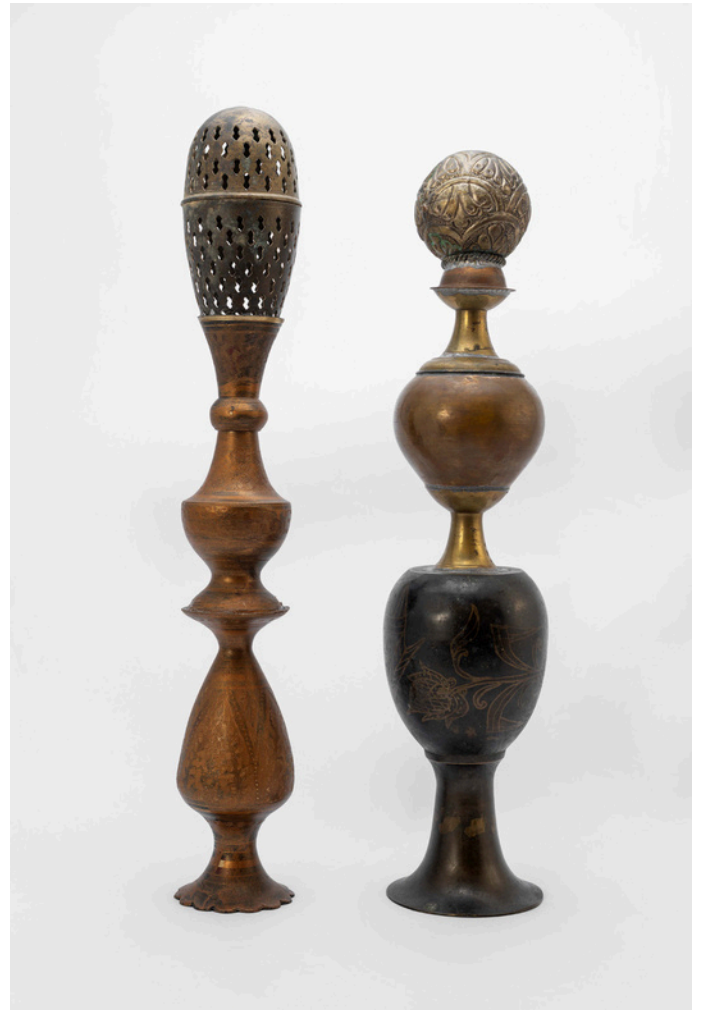


*Untitled*, 1998  
Etching  
Signed and dated 'dln Reddi '98'  
lower right  
19 1/2 x 9 1/2 in. | 49.5 x 24.1 cm.  
A/P





*Untitled*, 1988  
Etching  
Signed and dated 'dln Reddi '88'  
lower right  
19 3/4 x 12 in. | 50.2 x 30.5 cm.  
A/P



*Couple*, 2002  
Metal assemblages  
Left: 21 x 3 1/2 x 3 1/2 in.  
53.3 x 8.8 x 8.8 cm.  
Right: 20 x 4 1/2 x 4 1/2 in.  
50.8 x 11.4 x 11.4 cm.



*Untitled, 1973*  
India ink on paper  
Signed and dated 'dln 73'  
lower center  
6 x 8 in. | 15.2 x 20.3 cm.



*Untitled, 1973*  
India ink on paper  
Signed and dated 'DLN 73'  
on reverse  
6 x 8 in. | 15.2 x 20.3 cm.



*Untitled*, 1994 - 97

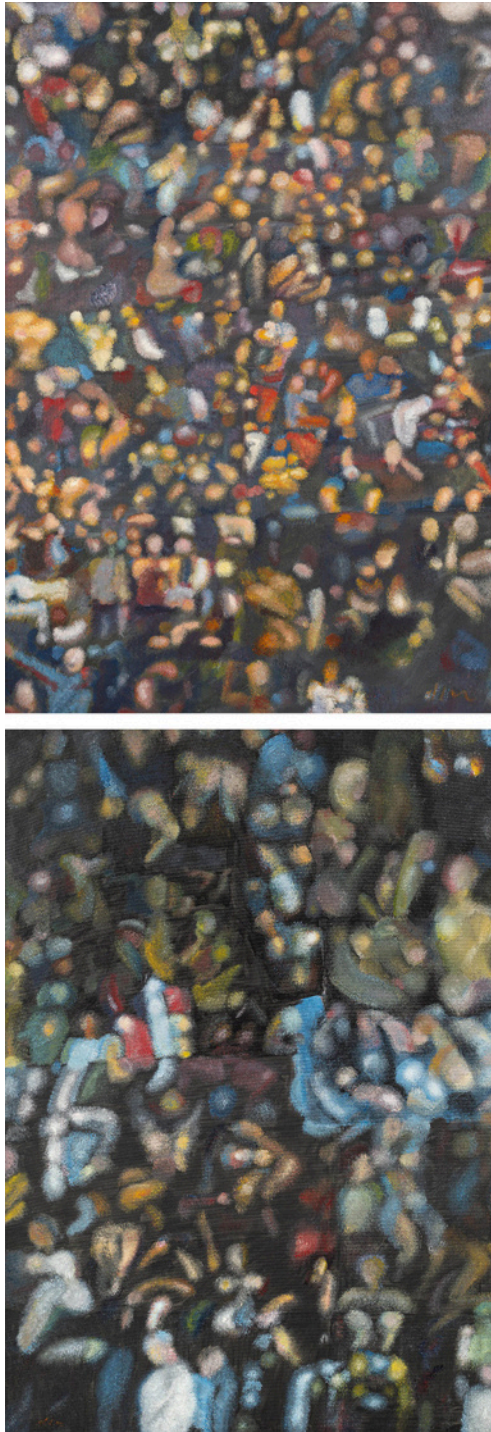
Metal alloy and wood assemblage  
24 1/2 x 12 3/4 x 5 in. 62.2 x 32.4 x  
12.7 cm.





*Untitled, 2003*

Acrylic on canvas board  
Signed 'dln' upper left  
16 x 20 in. | 40.6 x 50.8 cm.



*Untitled, 2008*

Enamel on canvas

Top Panel: Signed and dated 'dln '08' lower right

Bottom Panel: Signed and dated 'dln '08' lower left

Signed and dated 'dln Reddi '08' on reverse, both panels

Diptych Size: 72 x 24 in. | 182.8 x 61 cm.

Each 36 x 24 in. | 91.4 x 61 cm.

Diptych



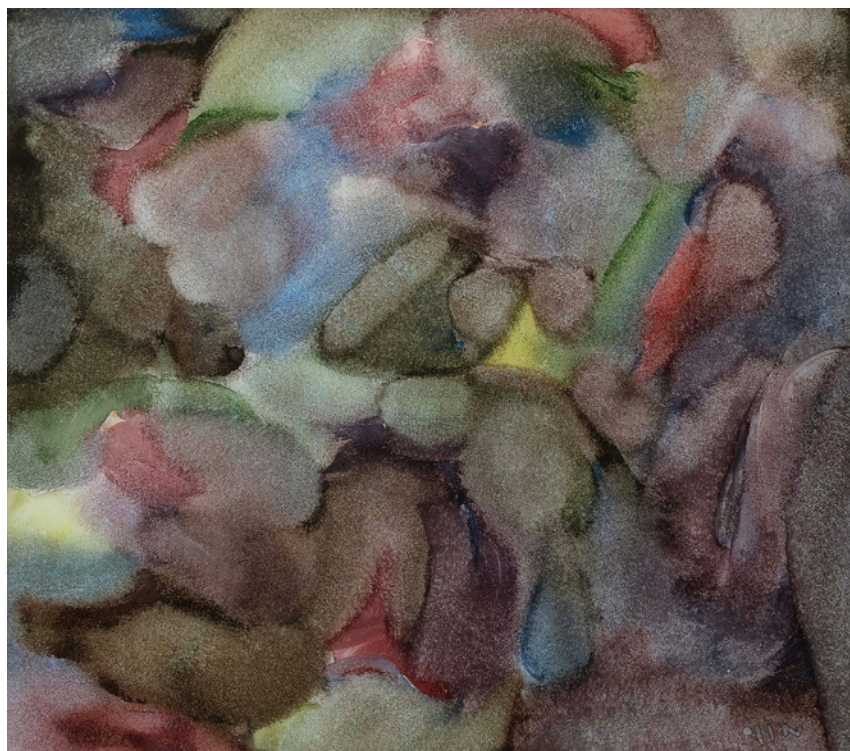


*Untitled*, Late 80s

Cast bronze  
2 3/4 x 7 1/2 x 3 1/2 in.  
7 x 19.1 x 8.9 cm.

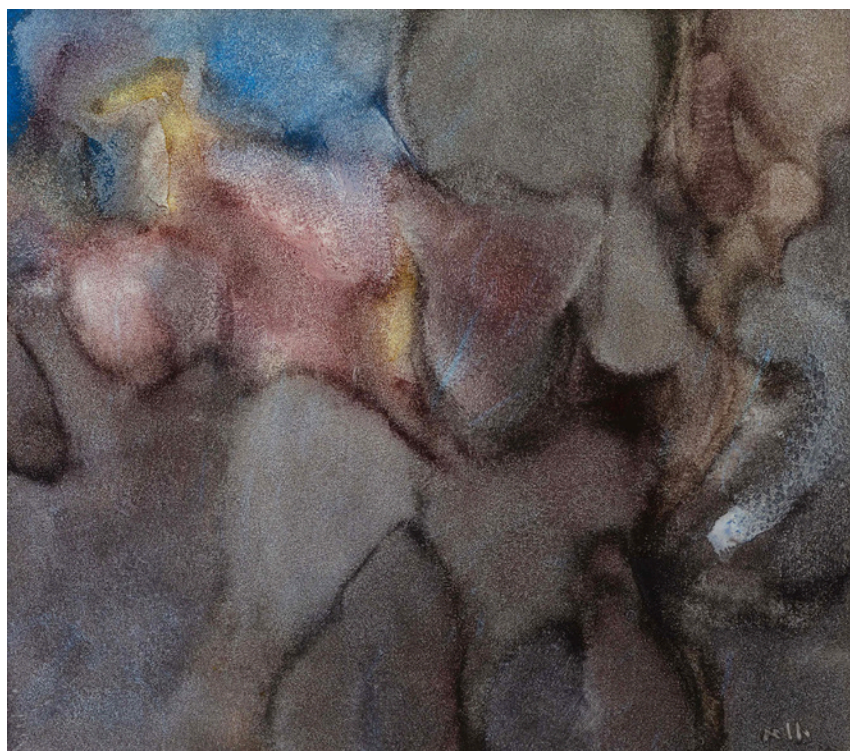
*Untitled, 2011*

Reverse painting on acrylic sheet  
Signed 'dln' lower left  
Signed and dated 'dln '011'  
on reverse  
16 x 18 in. | 40.6 x 45.7 cm.



*Untitled, 2011*

Reverse painting on acrylic sheet  
Signed 'dln' lower left  
Signed and dated 'dln '011'  
on reverse  
16 x 18 in. | 40.6 x 45.7 cm.







*Unframed,*

Pastel on paper

Signed and dated 'dln Reddi '85'

lower right

16 1/2 x 12 in. | 41.9 x 30.5 cm.



*Unframed,*

Pastel on paper

Signed and dated 'dln Reddi '85'

lower right

16 1/2 x 12 in. | 41.9 x 30.5 cm.



*Untitled, 1985*

Pastel on paper

Signed and dated 'dl n Reddi '85'

lower right

12 x 16 1/2 in. | 30.5 x 41.9 cm.





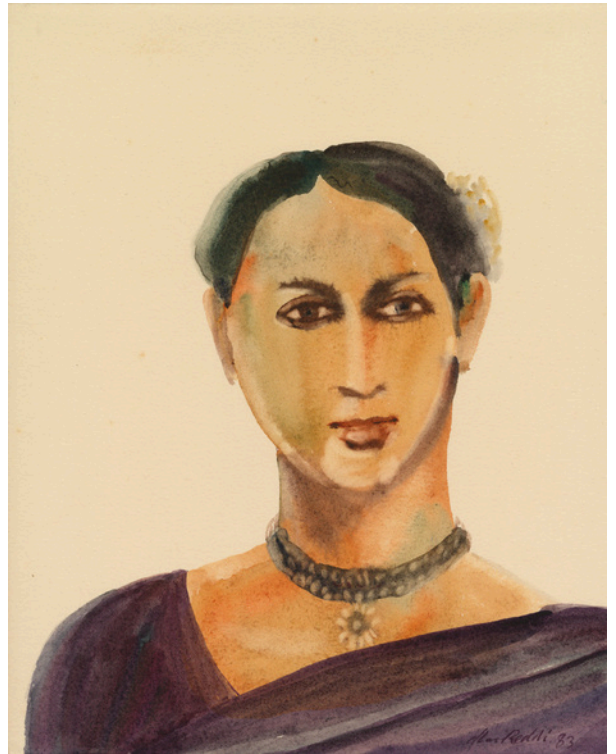
*Untitled*, Late 80s

Cast bronze  
12 1/2 x 11 x 6 in.  
31.8 x 27.9 x 15.2 cm.



*Untitled, 1983*

Watercolour on paper  
Signed and dated 'dln Reddy '83'  
lower right  
13 x 10 1/4 in. | 33 x 26 cm.



*Untitled, 1983*

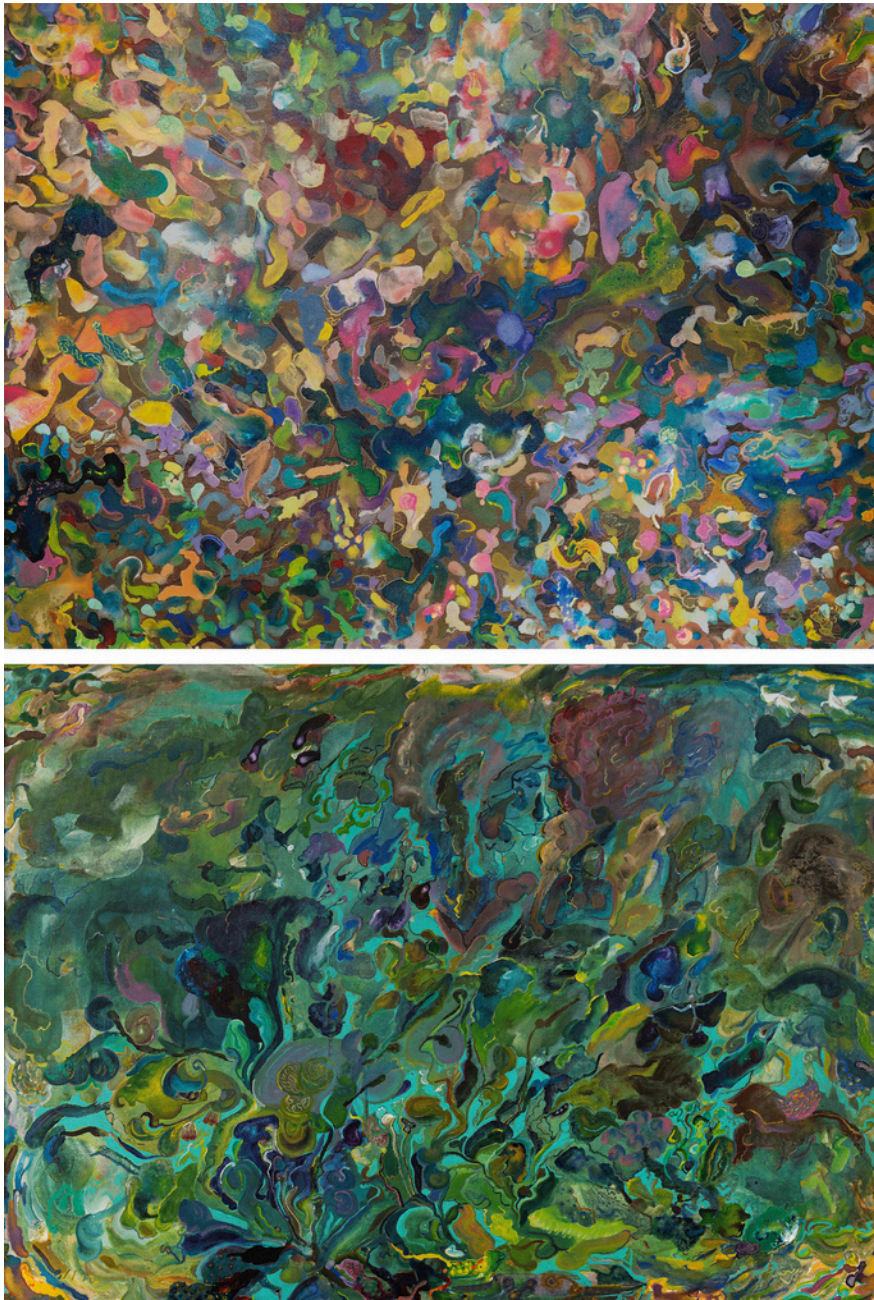
Watercolour on paper  
Signed 'dln Reddy' lower right  
12 x 8 3/4 in. | 30.5 x 22.2 cm.





*Untitled*, Late 80s

Metal sculpture  
5 1/2 x 7 1/2 x 3 in.  
14 x 19.1 x 7.6 cm.



*Lost in the Jungle, 2015*

Acrylic on canvas

Top Panel: Signed 'dIn' lower left

Bottom Panel: Signed 'dIn' lower left

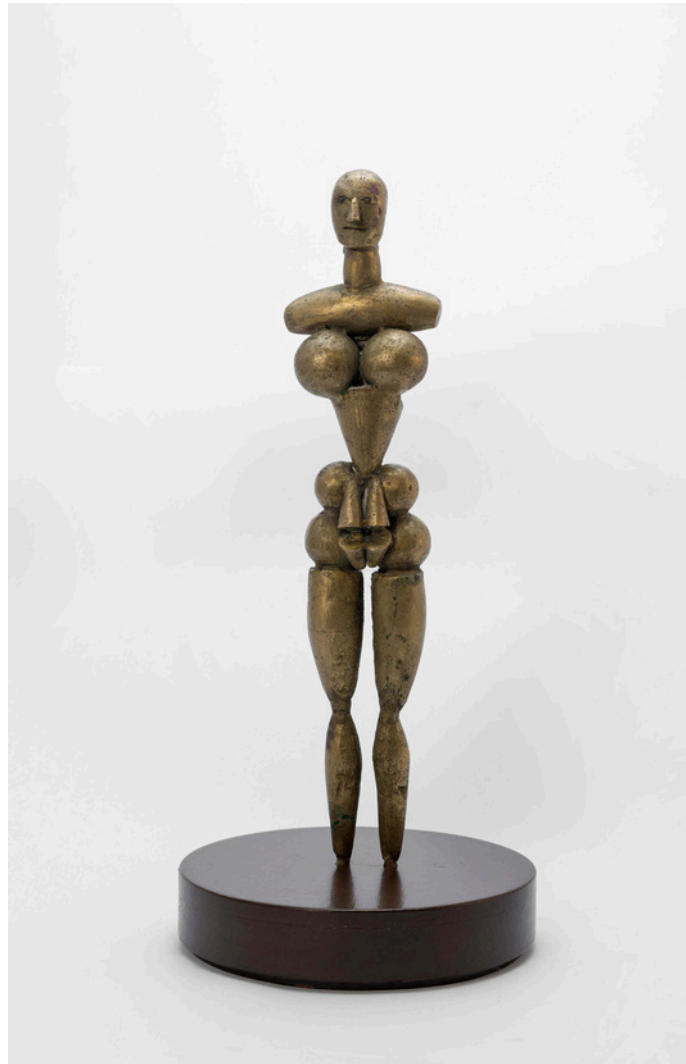
Signed 'dIn Reddi' on reverse, both panels

Inscribed 'Lost in the Jungle' on reverse

Diptych: 72 x 48 in. | 182.8 x 122 cm.

Each 36 x 48 in. | 91.4 x 122 cm.

Diptych



*Untitled*, 1996 - 97

Brass

16 x 4 x 2 1/2 in.

40.6 x 10.2 x 6.3 cm.





*Lady in the garden, 2015*

Acrylic on canvas

Signed 'dln' upper right

Signed and dated 'dln 2015' on reverse

Inscribed 'Lady in the garden' on reverse

8 x 7 1/2 in. | 20.3 x 19.1 cm.

Installation views









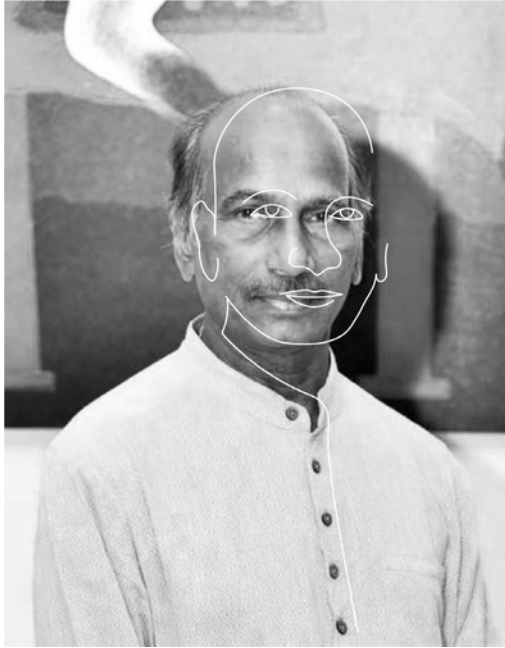












DLN REDDY (b. 1949)

DLN Reddy gained his Diploma in Painting from Fine Arts College, Hyderabad before joining MS University, Baroda in 1971 to study Printmaking. He went on to teach both in Kerala as well as in Telangana. In a career spanning five decades, Reddy's creative output spans an enormous range of media including paintings, sculpture and installation. A restless artist by nature, his stylistic reference points were in a constant process of flux. At the same time, a commitment to the human figure, especially the female form, is discernible as a thread connecting his entire career.

Reddy was selected for numerous national and international exhibitions, and early on in his career he was invited for a large number of graphics and printmaking exhibitions.

DLN Reddy lives and works in Hyderabad.



#### Education:

- 1971 Diploma Printmaking Graphic Arts, M. S. University, Baroda, IN
- 1969 Diploma Painting, Government College of Fine Arts, Hyderabad, IN

#### Scholarships/awards:

- 1982 Outstanding Artist's Fellowship, Department of Culture, Government of India
- 1982 Elizabeth Greenshield Foundation, Grant, Canada
- 1982 Group '8' Award, New Delhi, IN
- 1977 Gold Medal, Andhra Pradesh Lalit Kala Academy
- 1974 National Scholarship
- 1970-71 Andhra Pradesh Lalit Kala Academy Award For Print

#### Selected Solo and Group Exhibitions:

- 2024 Simple Tales: Attend, Chatterjee & Lal, Mumbai, IN
- 2024 Uncovered, Chatterjee & Lal, Mumbai, IN
- 2010 Sculpture By The Sea, 14th Annual Exhibition, Bondi, Australia
- 2007 'Eternity' A Group Show of Indian Artists, Gaithersburg Art Barn, Maryland, USA, Organised by Shrishti Art Gallery, Hyderabad, IN
- 2007 Paintings, Drawings & Sculpture, Sridharani Art Gallery, New Delhi, IN, Curated by Shrishti Art Gallery
- 2007 Paintings & Drawings, Shrishti Art Gallery, Hyderabad, IN
- 2004 From Sculpture To Sculpturesque, Citramayee, State Art Gallery, Hyderabad, IN
- 2002 The Human Edge, Visual Art Gallery, India Habitat Centre, New Delhi, IN, Curated by Gallery Threshold
- 2000 Thematic Show 'head' For Indian Contemporary Art In Dubai, Organised by Gallery Espace

- 2000 Sculpture & Gouache on Board, Minaaz Art Gallery, Hyderabad, IN
- 1998 Paintings, Sculpture & Graphics, Minaaz Art Gallery, Hyderabad, IN
- 1997 Paintings and Sculptures, Sista's Art Gallery, Bangalore, IN
- 1995 One – Man Exhibition of Drawings and Oils, Gallery '7', Bombay, IN
- 1992 Oils and Glass Paintings, Sanskriti Art Gallery, Kolkata, IN
- 1992 Glass Paintings and Wood Assemblages, Pundole Art Gallery, Bombay, IN
- 1989 'Timeless Art Exhibition', Times Of India, Sotheby's Auction, Bombay, IN
- 1989 Paintings, Prints and Sculptures, Cmc Art Gallery, New Delhi, IN
- 1987 Water Colours, Drawings And Pastels, Pundole Art Galley, Bombay, IN
- 1984 A Touring Group Exhibition of Five Indian Artists to Five Major Cities in India
- 1982 Ninth International Triennale of Coloured Graphic Prints, Genchen, Switzerland
- 1982 Group Exhibition of Seven Indian Artists in Several West German Cities
- 1982 Indo-german Artist Workshop at Braunschneigh, West Germany and Travelled in Europe
- 1981 Indian Graphic Exhibition to Cuba under Cultural Exchange Programme
- 1979 Invited to select two Printmakers from India in Sixth British International Print Biennale, UK
- 1978 'New Contemporaries' by Gulam Mohamed Sheikh, Sponsored by Marg and Indian Society for Art Appreciation, Bombay, IN
- 1977 'Pictorial Space' A Point Of View On Contemporary Indian Art by Geeta, Kapur
- 1977 Paintings and Prints, Max Muller Bhavan, Bombay, IN
- 1976 Paintings and Oil Pastels, Max Muller Bhavan, Hyderabad, IN
- 1973 Paintings and Prints, Jehangir Art Gallery, Bombay, IN

Other Exhibitions/workshops- National And International:

- 2004 Sixth Bharath Bhavan International Biennale of Print Art,  
Invited as the Jury Member, Bhopal, Madhya Pradesh, IN
- 2002 Art Camp Curiosity, Kolkata, IN, Organised by Gallery Threshold
- 2000 Art Camp, Cida De Goa, Panaji, Goa, IN
- 1993 Artists' Workshop, Baroda, IN, Sponsored by Alembic
- 1998 Sculpture Camp 'Uttarayan', Baroda, IN, Sponsored by Bayer Abs.
- 1985 Painters Camp, Ipc, Baroda, IN
- 1982 Print-making Workshop, Kala Bhavan, Shantiniketan, IN
- 1979 Sixth British International Print Biennale, UK
- 1977 Artists' Workshop, Kasauli, Himachal Pradesh, IN
- 1975 Biennale of Graphic Arts, Liubljinana, Yugoslavia
- 1974 Third International Exhibition of Graphic Art, Frechen, West Germany
- 1973 Graphics Workshop, Baroda, IN
- 1972 Third British International Print Biennale, UK



Chatterjee & Lal was formed in 2003 by husband and wife team Mortimer Chatterjee and Tara Lal. Today based in Mumbai's Colaba art district, the gallery is an important node in the city's maturing art scene. Whilst the gallery has always focused on the work of emerging and mid-career artists, more recently programming has included historical material that adds to the corpus of knowledge on twentieth century histories of art and design.

Gallery artists exhibit globally and the gallery participates in select art fairs. The directors are published authors, regularly sharing their insights on art in national and international publications.

Chatterjee & Lal  
01/18 Kamal Mansion Floor 1  
Arthur Bunder Road Colaba  
Mumbai 400005  
India



@chatterjeeandlal

#### Gallery Timings

12 PM - 5 PM  
Tuesday - Saturday  
And by appointment  
[chatterjeeandlal.com](http://chatterjeeandlal.com)

+91 98202 98246

